



From thermodynamics to processes: AI facing small data and big models

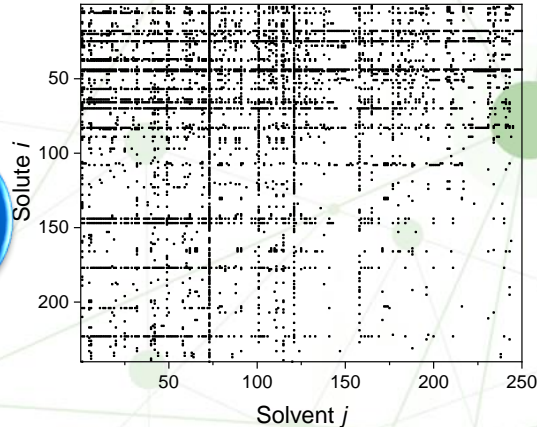
Michael Bortz

27.06.2023

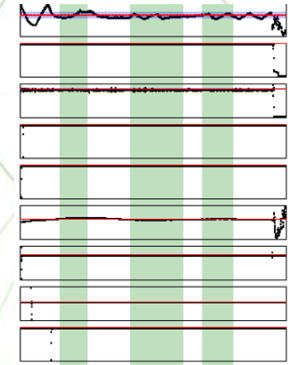


KE-3N

Small data



$\gamma^\infty(T = 298.15 \pm 1 \text{ K})$ from DDB:
240x250=60.000 entries; 4094=6,8% measured

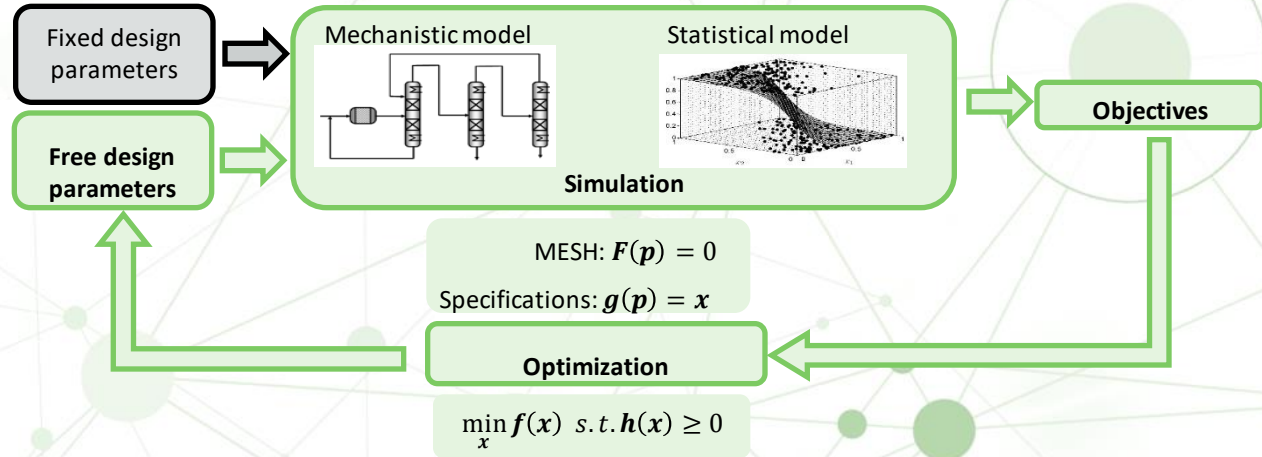


Miniplant data over several hours

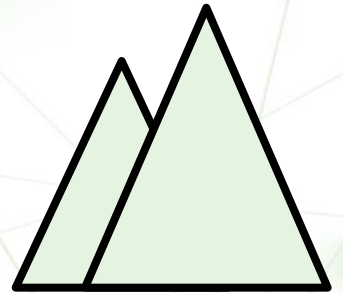
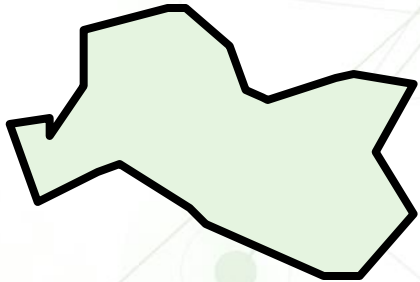
- Expensive experiments (high value, small volume)
- Restricted variability in process operation
- Restricted access, data are considered as confidential

Complex models

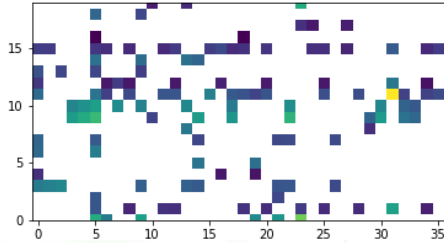
- Mixture properties
- Topology
- Unit operations



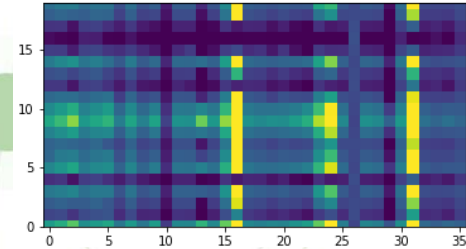
- Feasible domain for \mathbf{x} is generally unknown (convergence, constraints)
- Not much structural information



Contributions from KEEN



Matrix/tensor completion



- Integration of prior model knowledge
- Benchmarking on exemplary industrial test cases by physical models
- Experiments to create new data
- Software prototype

- Integration of user-defined units
- Real-time surrogates
- Explicit instead of implicit models
- Software prototypes

Simulation of process data

